

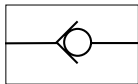
Check valves



Features

- Can be used with a variety of chemicals and gases. However, when using other than water or air, please refer to Chemical Compatibility Tables, or consult with your DMT representative.
- Do not apply excessive vibration, shock, torque, or other strong loads on the fittings. The valve body may be damaged or the collets may be dislocated.
- Superior function in a compact size.
- Color : Inch Size - White
Metric Size - Black

Check Valve Sign



CHV - Check Valve

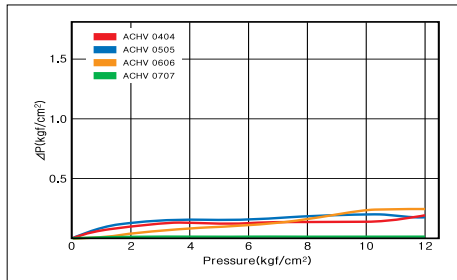


PART NO.	Outlet Tube O.D.	Inlet Tube O.D.	Qty / Box
ACHV 0404	1/4	1/4	250
ACHV 0405	1/4	5/16	200
ACHV 0505	5/16	5/16	200
ACHV 0606	3/8	3/8	200
ACHV 0707	1/2	1/2	150

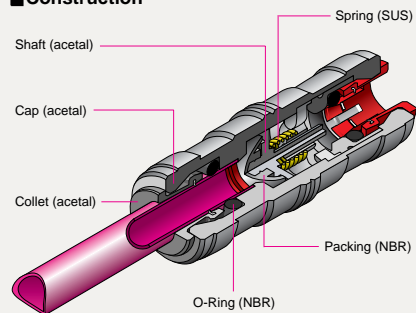
PART NO.	Outlet Tube O.D.(mm)	Inlet Tube O.D.(mm)	Qty / Box
ACHV 0606M	6	6	250
ACHV 0808M	8	8	200
ACHV 1010M	10	10	200
ACHV 1212M	12	12	150

Operating Pressure Range (at 20°C)

1/4" (6mm)	0.1 ~ 12kgf/cm ²	10kgf/cm ²
5/16" (8mm)	0.1 ~ 12kgf/cm ²	10kgf/cm ²
3/8" (10mm)	0.1 ~ 12kgf/cm ²	10kgf/cm ²
1/2" (12mm)	0.1 ~ 12kgf/cm ²	10kgf/cm ²



Construction



TS - Tube Support



PART NO.	Tube O.D. (Inch)	Tube I.D. (Inch)	Qty / Box
ATS 04	1/4	0.170	3,500
ATS 05	5/16	1/4	3,000
ATS 06	3/8	5/16	2,000
ATS 07	1/2	3/8	1,500

PART NO.	Tube O.D. (mm)	Tube I.D. (mm)	Qty / Box
ATS 06M	6	4	3,500
ATS 08M	8	6	3,000
ATS 10M	10	7	2,000
ATS 12M	12	9	1,500

- The tube support is recommended for use with soft or very thin walled tubing.

DSI - Double Seal Insert



PART NO.	Tube O.D. (Inch)	Tube I.D. (Inch)	Qty / Box
ADSI 06	3/8	5/16	2,000

PART NO.	Tube O.D. (mm)	Tube I.D. (mm)	Qty / Box
ADSI 08M	8	6	3,000
ADSI 10M	10	7	2,000
ADSI 12M	12	9	1,000

COV - Collet Cover



PART NO.	Tube O.D. (Inch)	Qty / Box
ACOV 04	1/4	700
ACOV 05	5/16	600
ACOV 06	3/8	600
ACOV 07	1/2	500

PART NO.	Tube O.D. (mm)	Qty / Box
ACOV 06M	6	700
ACOV 08M	8	600
ACOV 10M	10	600
ACOV 12M	12	500

LC - Locking Clip



PART NO.	Tube O.D. (Inch)	Qty / Box
ALC 04	1/4	10000
ALC 05	5/16	8000
ALC 06	3/8	7000
ALC 07	1/2	5000

PART NO.	Tube O.D. (mm)	Qty / Box
ALC 06M	6	10000
ALC 08M	8	8000
ALC 10M	10	7000
ALC 12M	12	5000



- Ensures a firm and more secure connection
- With its protruding tab, attaching and detaching the clip is easy.
- Available in a variety of colors - allows easy color-coding.

FBC - Flow Bend Clip



PART NO.	Tube O.D. (Inche)	Qty / Box	PART NO.	Tube O.D. (mm)	Qty / Box
AFBC 05	5/16	300	AFBC 08M	8	300
AFBC 06	3/8	200	AFBC 10M	10	200

PART NO.	Tube O.D. (Inche)	Qty / Box
AFBC 08	1/2(12mm) to 5/8(15mm)	100

- Used to provide a simple means for a smooth 90 degree tube bend without kinks.
- May be secured to equipment or a wall using screws.

SP - Spanner



PART NO.	Tube O.D.
SP	3/16, 1/4, 5/16, 3/8, 1/2

- Convenient for separating various collets and tubes.

PSP - Power Spanner



PART NO.	Tube O.D.
PSP	5/16, 3/8

- Convenient for separating power fittings.

New

RA - Release Aid



PART NO.	Tube O.D. (Inch)	Qty / Box
ARA 06	3/8	5000
ARA 07	1/2	4000

PART NO.	Tube O.D. (mm)	Qty / Box
ARA 10M	10	5000
ARA 12M	12	4000

TC - Tube Cutter

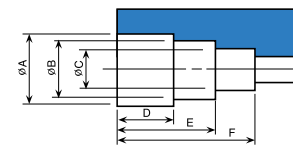


PART NO.	Tube O.D.
TC	MAX. DIA 1/2" or 13mm

- DMfit[®] Tube Cutter with quality blade is suitable for cutting plastic tubing sizes up to 13mm.

Half cartridges

- DMfit[®] half cartridges are available in brass, stainless steel, and acetal. They allow simple and economical connection of tubing into metal or plastic bodies used for pumps, filters, and other fluid-handling products. The tables below provide details required of mating parts.
- To install, the cartridge COLLAR is pressed into the "A" diameter. Then insert the O-RING and COLLET. The assembly is then complete and ready for use.
- For designing with acetal half-cartridges, first consult with your DMT representative.



Inch Sizes - using one o-ring

(Unit: inches)

Size (Inch)	$\phi A \pm 0.002'$	$\phi B \pm 0.002'$	$\phi C \pm 0.002'$	D +0.011' -0	E $\pm 0.006'$	F $\pm 0.006'$
5/32	0.490	0.317	0.161	0.181	0.370	0.502
3/16	0.470	0.344	0.197	0.181	0.370	0.502
1/4	0.530	0.421	0.254	0.181	0.373	0.545
5/16	0.542	0.465	0.323	0.213	0.413	0.615
3/8	0.630	0.563	0.378	0.268	0.472	0.719
1/2	0.775	0.661	0.508	0.303	0.525	0.827

Metric Sizes - using one o-ring

(Unit: mm)

Size (mm)	$\phi A \pm 0.05$	$\phi B \pm 0.05$	$\phi C \pm 0.05$	D $^{+0.25}_0$	E ± 0.15	F ± 0.15
4	12.44	8.05	4.10	4.59	9.39	12.75
5	11.93	8.73	5.10	4.59	9.39	12.75
6	13.46	10.69	6.10	4.59	9.47	13.84
8	13.76	11.81	8.10	5.41	10.50	15.63
10	16.00	14.30	10.10	6.80	11.98	18.27
12	19.68	16.78	12.10	7.69	13.33	21.00

Inch Sizes - using two o-rings

(Unit: inches)

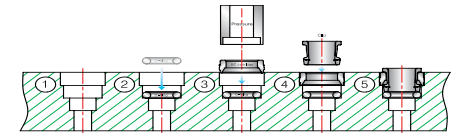
Size (Inch)	$\phi A \pm 0.002'$	$\phi B \pm 0.002'$	$\phi C \pm 0.002'$	D +0.011' -0	E $\pm 0.006'$	F $\pm 0.006'$
5/32	0.490	0.317	0.161	0.181	0.462	0.594
3/16	0.470	0.344	0.197	0.181	0.462	0.594
1/4	0.530	0.421	0.254	0.181	0.477	0.653
5/16	0.542	0.465	0.323	0.213	0.508	0.709
3/8	0.630	0.563	0.378	0.268	0.574	0.822
1/2	0.775	0.661	0.508	0.303	0.629	0.945

Metric Sizes - using two o-rings

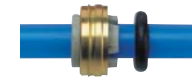
(Unit: mm)

Size (mm)	$\phi A \pm 0.05$	$\phi B \pm 0.05$	$\phi C \pm 0.05$	D $^{+0.25}_0$	E ± 0.15	F ± 0.15
4	12.44	8.05	4.10	4.59	11.73	15.08
5	11.93	8.73	5.10	4.59	11.73	15.08
6	13.46	10.69	6.10	4.59	12.22	16.59
8	13.76	11.81	8.10	5.41	12.90	18.00
10	16.00	14.30	10.10	6.80	14.28	20.87
12	19.68	16.78	12.10	7.69	16.27	24.00

Cartridge Assembly



BC - Brass Cartridge



Inch size	PART NO.	Tube O.D.	Qty / Box
BRASS CARTRIDGE O-RING NBR	BC 01	5/32	2000
	BC 03	3/16	2000
	BC 04	1/4	1000
	BC 05	5/16	1000
	BC 06	3/8	700
	BC 07	1/2	500

Metric size	PART NO.	Tube O.D. (mm)	Qty / Box
BRASS CARTRIDGE O-RING NBR	BC 04M	4	2000
	BC 05M	5	1000
	BC 06M	6	1000
	BC 08M	8	1000
	BC 10M	10	700
	BC 12M	12	500

SC - Stainless Steel Cartridge



Inch size	PART NO.	Tube O.D.	Qty / Box
STAINLESS STEEL CARTRIDGE O-RING NBR	SC 01	5/32	2000
	SC 03	3/16	2000
	SC 04	1/4	1000
	SC 05	5/16	1000
	SC 06	3/8	700
	SC 07	1/2	500

Metric size	PART NO.	Tube O.D. (mm)	Qty / Box
STAINLESS STEEL CARTRIDGE O-RING NBR	SC 04M	4	2000
	SC 05M	5	1000
	SC 06M	6	1000
	SC 08M	8	1000
	SC 10M	10	700
	SC 12M	12	500

- BC will not be suitable to a plated copper body.
- Further more specifications in the use, please contact to our sales representative in your side.