

TEU - Tube Elbow Union



PART NO.	Tube O.D.	Stem O.D.	Qty / Box
PTEU 0404	1/4	1/4	500
PTEU 0505	3/8	3/8	400
PTEU 0606	3/8	3/8	250
PTEU 0707	1/2	1/2	200

RD - Reducer



PART NO.	Tube O.D.	Stem O.D.	Qty / Box
PRD 0406	1/4	3/8	500
PRD 0607	3/8	1/2	300

FA - Female Adapter NPTF Thread



PART NO.	Tube O.D.	NPTF Thread	Qty / Box
PFA 0402	1/4	1/8	500
PFA 0404	1/4	1/4	400
PFA 0602	3/8	1/8	300
PFA 0604	3/8	1/4	300

SA - Stem Adapter NPTF Thread



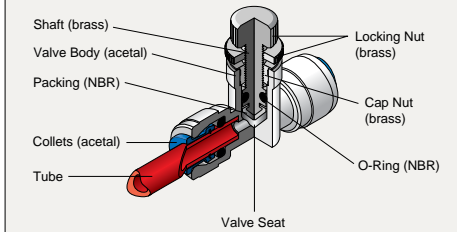
PART NO.	Stem O.D.	NPTF Thread	Qty / Box
PSA 0402	1/4	1/8	500
PSA 0404	1/4	1/4	500
PSA 0504	5/16	1/4	500
PSA 0506	5/16	3/8	300
PSA 0604	3/8	1/4	400
PSA 0606	3/8	3/8	300
PSA 0706	1/2	3/8	250
PSA 0707	1/2	1/2	150

Control valves

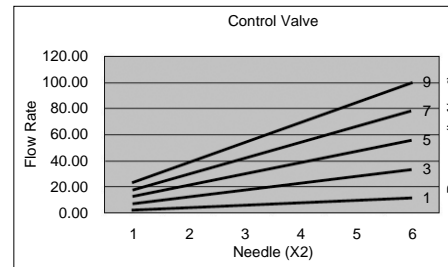
■ Features

- Highly durable and fatigue resistant.
- Can be used with a variety of chemicals & gases. However, when using other than water or air, please refer to the Chemical Compatibility Tables, or consult with your DMT representative.
- Do not apply excessive vibration, torque, shock, or other strong loads on the fittings. The valve body may be damaged or collects may be dislocated.
- Maximum working pressure: 150 psi (10 kgf/cm²) (with water at ambient temperature)
- Color : Inch Size - White
Metric Size - Black

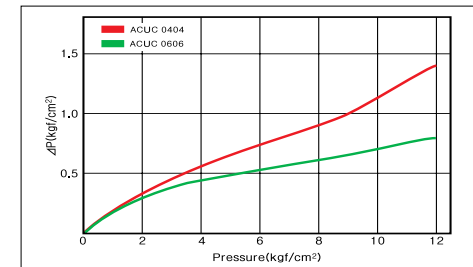
■ Construction



■ Flow Rate Per Rotation of Valve Stem



※ The above data may vary depending on the time and temperature variations.



CUC - Control valve Union Connector



PART NO.	Tube O.D.	Tube O.D.	Qty / Box
ACUC 0404	1/4	1/4	250
ACUC 0606	3/8	3/8	150
PART NO.	Tube O.D. (mm)	Tube O.D. (mm)	Qty / Box
ACUC 0606M	6	6	200
ACUC 1010M	10	10	150

CFA - Control valve Female Adapter



PART NO.	Tube O.D.	NPTF Thread	Qty / Box
ACFA 0404	1/4	1/4	250
ACFA 0606	3/8	3/8	150
PART NO.	Tube O.D. (mm)	BSP(T) Thread	Qty / Box
ACFA 0604M	6	1/4	200
ACFA 1006M	10	3/8	150

CEU - Control valve Elbow Union



PART NO.	Tube O.D.	Tube O.D.	Qty / Box
ACEU 0404	1/4	1/4	250
ACEU 0606	3/8	3/8	150
PART NO.	Tube O.D. (mm)	Tube O.D. (mm)	Qty / Box
ACEU 0606M	6	6	250
ACEU 1010M	10	10	150

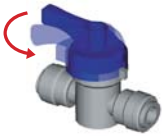
CMC - Control valve Male Connector



PART NO.	Tube O.D.	NPTF Thread	Qty / Box
ACMC 0404	1/4	1/4	250
ACMC 0606	3/8	3/8	150
PART NO.	Tube O.D. (mm)	BSP(T) Thread	Qty / Box
ACMC 0604M	6	1/4	250
ACMC 1006M	10	3/8	150

Hand valves

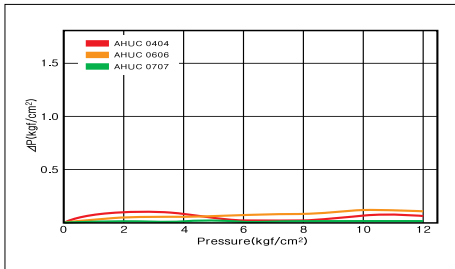
Features



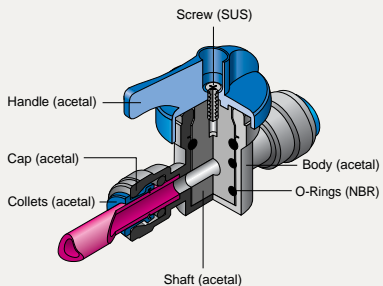
- Can be used with a variety of chemicals & gases. However, when using other than water or air, please refer to the Chemical Compatibility Tables or consult with your DMT representative.

- Do not apply excessive vibration, torque, shock, or other strong loads on the fittings. The valve body may be damaged, or the collets may be dislocated.

- Easy quarter-turn operation for opening and closing.
- Partial flow control is possible (high, medium, low).
- Ruggedly designed for durability.
- Maximum Working Pressure: 150 psi (10kgf/cm²) (with water at ambient temperature)
- Color : Inch Size - white
Metric Size - Black
- Max. Handle Torque : 0.2 N-M



Construction



HMC - Hand valve Male Connector



PART NO.	Tube O.D.	NPTF Thread	Qty / Box
AHMC 0404	1/4	1/4	150
AHMC 0606	3/8	3/8	100
AHMC 0707	1/2	1/2	70

HUC - Hand valve Union Connector



PART NO.	Tube O.D.	Tube O.D.	Qty / Box
AHUC 0404	1/4	1/4	150
AHUC 0606	3/8	3/8	100
AHUC 0707	1/2	1/2	70

HFA - Hand valve Female Adapter



PART NO.	Tube O.D.	NPTF Thread	Qty / Box
AHFA 0404	1/4	1/4	150
AHFA 0606	3/8	3/8	100
AHFA 0607	3/8	1/2	100
AHFA 0706	1/2	3/8	70
AHFA 0707	1/2	1/2	70

HFAUC - Hand valve Female Adapter Union Connector



PART NO.	Tube O.D.	NPTF Thread	Qty / Box
AHFAUC 0607	3/8	1/2	100

PART NO.	Tube O.D. (mm)	BSP(PT) Thread	Qty / Box
AHFAUC 1007M	10	1/2	100

Hand valves

HMC - Hand valve Male Connector



PART NO.	Tube O.D.	BSP(PT) Thread	Qty / Box
AHMC 0604M	6	1/4	150
AHMC 1006M	10	3/8	100
AHMC 1207M	12	1/2	70

HUC - Hand valve Union Connector



PART NO.	Tube O.D. (mm)	Tube O.D. (mm)	Qty / Box
AHUC 0606M	6	6	150
AHUC 1010M	10	10	100
AHUC 1212M	12	12	70

HFA - Hand valve Female Adapter



PART NO.	Tube O.D. (mm)	BSP(PT) Thread	Qty / Box
AHFA 0604M	6	1/4	150
AHFA 1006M	10	3/8	100
AHFA 1007M	10	1/2	100
AHFA 1206M	12	3/8	70
AHFA 1207M	12	1/2	70

HUCS-Hand Valve Union Connector (Short Handle)



PART NO.	Tube O.D.	Tube O.D.	Qty / Box
AHUCS 0606	3/8	3/8	100

* Order sizes with short handle are available by customer's demand.

MCLP-Mounting Clip



PART NO.	Size	Qty / Box
AMCLP06	3/8	200

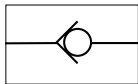
Check valves



■ Features

- Can be used with a variety of chemicals and gases. However, when using other than water or air, please refer to Chemical Compatibility Tables, or consult with your DMT representative.
- Do not apply excessive vibration, shock, torque, or other strong loads on the fittings. The valve body may be damaged or the collets may be dislocated.
- Superior function in a compact size.
- Color : Inch Size - White
Metric Size - Black

Check Valve Sign



CHV - Check Valve

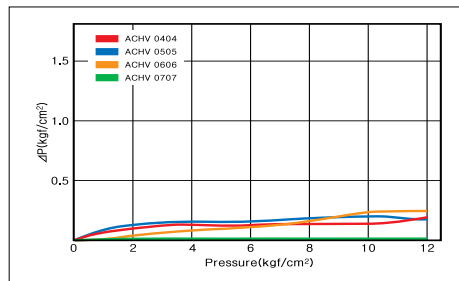


PART NO.	Outlet Tube O.D.	Inlet Tube O.D.	Qty / Box
ACHV 0404	1/4	1/4	250
ACHV 0405	1/4	5/16	200
ACHV 0505	5/16	5/16	200
ACHV 0606	3/8	3/8	200
ACHV 0707	1/2	1/2	150

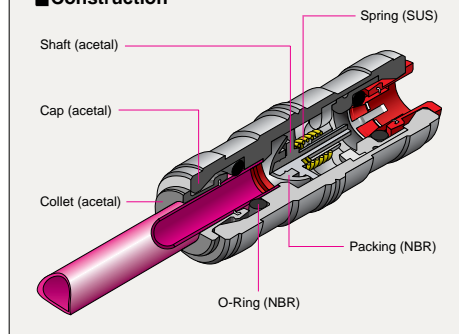
PART NO.	Outlet Tube O.D.(mm)	Inlet Tube O.D.(mm)	Qty / Box
ACHV 0606M	6	6	250
ACHV 0808M	8	8	200
ACHV 1010M	10	10	200
ACHV 1212M	12	12	150

■ Operating Pressure Range (at 20°C)

1/4" (6mm)	0.1 ~ 12kgf/cm ²	10kgf/cm ²
5/16" (8mm)	0.1 ~ 12kgf/cm ²	10kgf/cm ²
3/8" (10mm)	0.1 ~ 12kgf/cm ²	10kgf/cm ²
1/2" (12mm)	0.1 ~ 12kgf/cm ²	10kgf/cm ²



■ Construction



TS - Tube Support



PART NO.	Tube O.D. (Inch)	Tube I.D. (Inch)	Qty / Box
ATS 04	1/4	0.170	3,500
ATS 05	5/16	1/4	3,000
ATS 06	3/8	5/16	2,000
ATS 07	1/2	3/8	1,500

PART NO.	Tube O.D. (mm)	Tube I.D. (mm)	Qty / Box
ATS 06M	6	4	3,500
ATS 08M	8	6	3,000
ATS 10M	10	7	2,000
ATS 12M	12	9	1,500

- The tube support is recommended for use with soft or very thin walled tubing.

DSI - Double Seal Insert



PART NO.	Tube O.D. (Inch)	Tube I.D. (Inch)	Qty / Box
ADSI 06	3/8	5/16	2,000

PART NO.	Tube O.D. (mm)	Tube I.D. (mm)	Qty / Box
ADSI 08M	8	6	3,000
ADSI 10M	10	7	2,000
ADSI 12M	12	9	1,000

COV - Collet Cover



PART NO.	Tube O.D. (Inch)	Qty / Box
ACOV 04	1/4	700
ACOV 05	5/16	600
ACOV 06	3/8	600
ACOV 07	1/2	500

PART NO.	Tube O.D. (mm)	Qty / Box
ACOV 06M	6	700
ACOV 08M	8	600
ACOV 10M	10	600
ACOV 12M	12	500

LC - Locking Clip



PART NO.	Tube O.D. (Inch)	Qty / Box
ALC 04	1/4	10000
ALC 05	5/16	8000
ALC 06	3/8	7000
ALC 07	1/2	5000

PART NO.	Tube O.D. (mm)	Qty / Box
ALC 06M	6	10000
ALC 08M	8	8000
ALC 10M	10	7000
ALC 12M	12	5000



- Ensures a firm and more secure connection
- With its protruding tab, attaching and detaching the clip is easy.
- Available in a variety of colors - allows easy color-coding.